

**PAVILIONS**  
**ARTICLE: 3510.000**  
**TECHNICAL DESCRIPTION**

**Decorated pavilion**  
**Rectangular plan**  
**Column interaxis of 2,000mm [6' 6 3/4"]**  
**Standard height**

3510	000
Pavilion plan	Column interaxis and height

**Regulations of reference**  
 NTC 2008 DM 14/01/2008

**Components**  
 The columns (B) are made of cast iron, with a square base measuring 230x230mm [9"x9"] with bevelled corners and the stem is decorated with a floral bas-relief and twelve grooves, topped by a Corinthian capital, arranged with a spacing of 2,000mm [6' 6 3/4"].

The tubes (C) (diameter: 76mm [3"]) are made of hot-dip galvanised steel with a supporting function, as they are inside the columns. Each tube comprises a flange with four holes for fastening to the ground using anchor bolts.

The cover (D) is made from hot-dip galvanised steel beams, suitable for supporting window coverings. The perimeter tubular beam of the cover is decorated with cast iron lilies and palms.

The two tops (E), decorated with leaves in the central part, are made of cast iron and placed on top of the cover.

**Materials**  
 The standard colours are:  
 - Cast iron UNI EN 1561  
 - FE 360 steel UNI EN 10219-1  
 See the specific descriptions on the painting cycles of the materials that make up the product.

**Finishes**  
 The standard colours are:  
 - Neri Grey  
 - White RAL 9010  
 Other colours are available upon request.

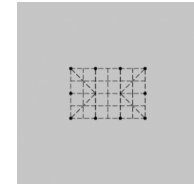
**Weight**  
 Standard indications

**Installation**  
 To place in operation, it is necessary to prepare a perfectly level brickwork base.

The electronic, hydraulic and flooring systems are not included.

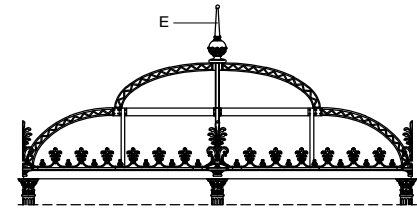
**Warranty**  
 Standard

Rectangular plan

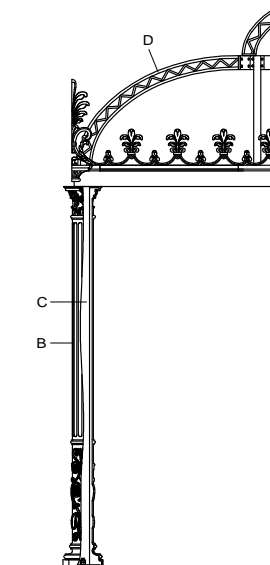


<b>Usable area</b>	-
<b>Covered area</b>	24m <sup>2</sup> [258 sq ft]
<b>Modules</b>	6/10

Column interaxis of 2,000mm [6' 6 3/4"]



Standard height



**PAVILIONS**  
**ARTICLE: 3510.000**  
**PLAN**  
**SCALE 1:50**

**Decorated pavilion**  
**Rectangular plan**  
**Column interaxis of 2,000mm [6' 6 3/4"]**  
**Standard height**

3510

Pavilion plan

000

Column interaxis and height

**Usable area**

-

**Covered area**

24m<sup>2</sup> [258 sq ft]

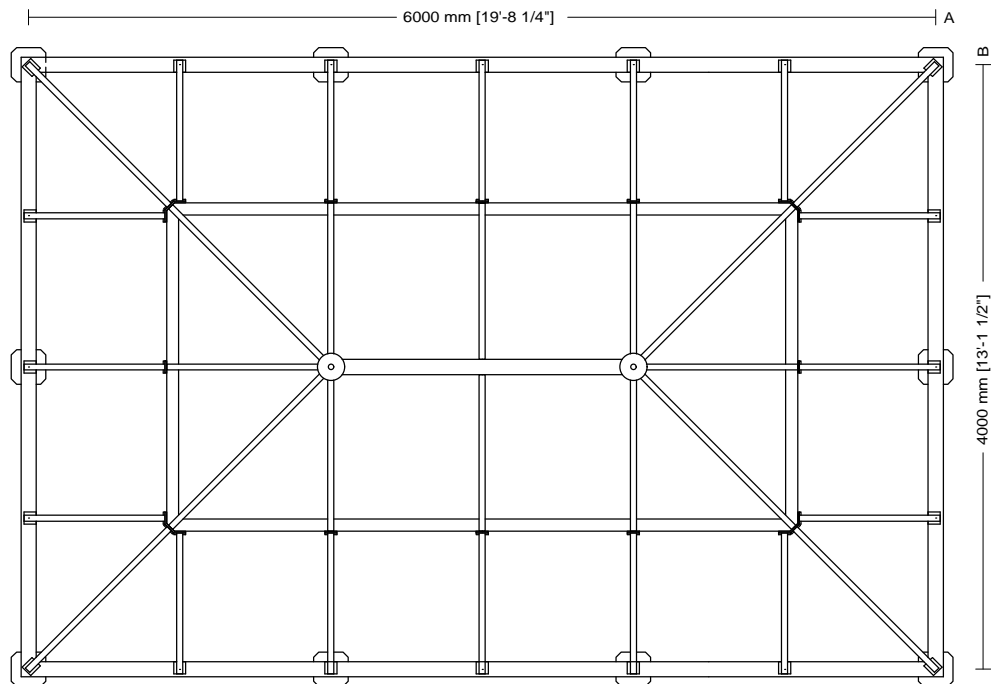
**Modules**

6/10

**Drawing key**

A Column axis

B Column axis



PAVILIONS  
ARTICLE: 3510.000  
ELEVATION  
SCALE 1:50

Decorated pavilion  
Rectangular plan  
Column interaxis of 2,000mm [6' 6 3/4"]  
Standard height

3510

Pavilion plan

000

Column interaxis  
and height

