

Regulations of reference
 NTC 2008 DM 14/01/2008

Components
 The columns (B) are made of cast iron, with a square plan measuring 230x230mm [9"x9"] with bevelled corners and the stem is decorated with a floral bas-relief and twelve grooves, topped by a Corinthian capital, arranged with a spacing of 4,000mm [13' 1 2/4"].

The tubes (C) (diameter: 76mm [3"]) are made of hot-dip galvanised steel with a supporting function, as they are inside the columns. Each tube comprises a flange with four holes for fastening to the ground using anchor bolts.

The cover (D) is made from hot-dip galvanised steel beams, suitable for supporting window coverings. The perimeter tubular beam of the cover is decorated with cast iron lilies and palms.

The top (E), decorated with leaves in the central part, is made of cast iron and placed on top of the cover.

Materials
 The standard colours are:
 - Cast iron UNI EN 1561
 - FE 360 steel UNI EN 10219-1
 See the specific descriptions on the painting cycles of the materials that make up the product.

Finishes
 The standard colours are:
 - Neri Grey
 - White RAL 9010
 Other colours are available upon request.

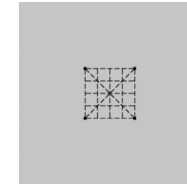
Weight
 Standard indications

Installation
 To place in operation, it is necessary to prepare a perfectly level brickwork base.

The electronic, hydraulic and flooring systems are not included.

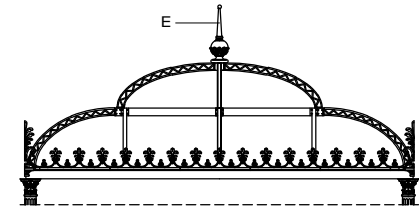
Warranty
 Standard

Rectangular plan

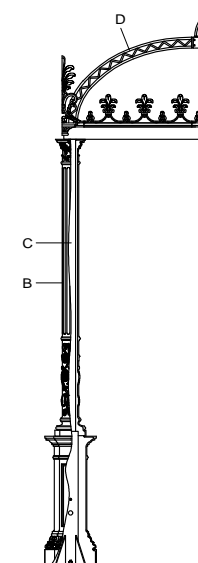


Usable area
-
Covered area
16m ² [172 sq ft]
Modules
4/8

Optimised column interaxis



Standard height



PAVILIONS
ARTICLE: 3508.200
PLAN
SCALE 1:50

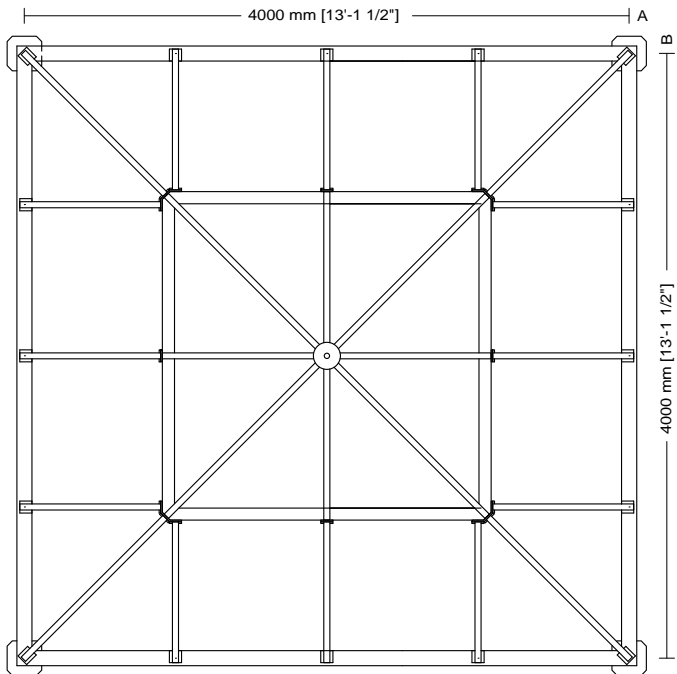
Decorated pavilion
Rectangular plan
Optimised column interaxis
Standard height

3508
Pavilion plan

200
Column interaxis
and height

Usable area
-
Covered area
16m ² [172 sq ft]
Modules
4/8

Drawing key
A Column axis
B Column axis



PAVILIONS
ARTICLE: 3508.200
ELEVATION
SCALE 1:50

Decorated pavilion
Rectangular plan
Optimised column interaxis
Standard height

3508

Pavilion plan

200

Column interaxis
and height

