

# NERI

HYDRA IN SENIGALLIA

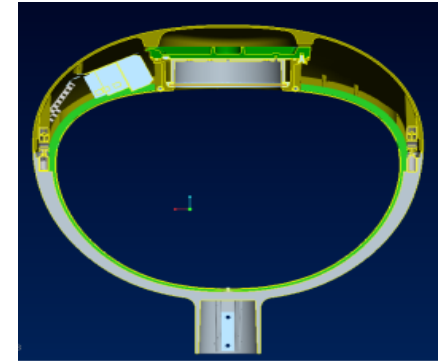
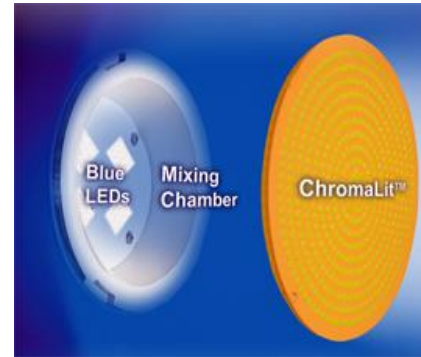
# HYDRA

The Hydra system, created by the designer Makio Hasuike, is the synthesis of the concept of comfort brought to the maximum results. Hydra is suitable for urban centres which, thanks to its spheroid shape, can add an unusual touch that is dreamlike, almost lunar

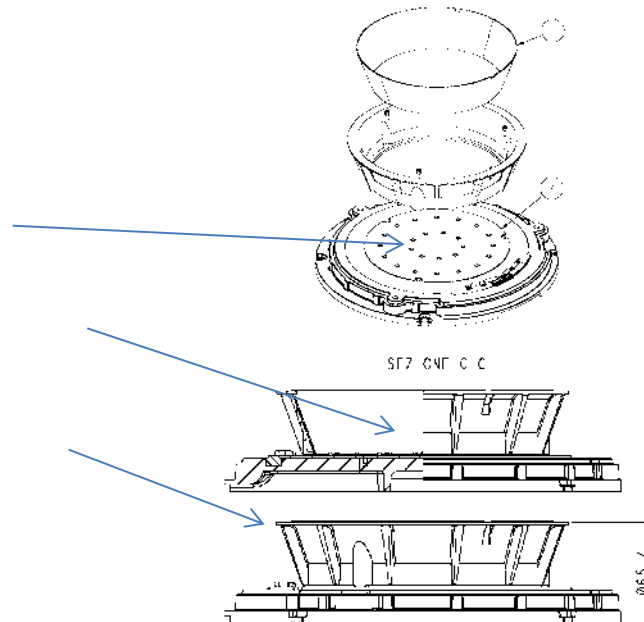


# HYDRA: solution with remote phosphor

Hydra is equipped with blue LEDs and a glass treated with remote phosphor: when the blue light passes through the glass it assumes a warm white tone

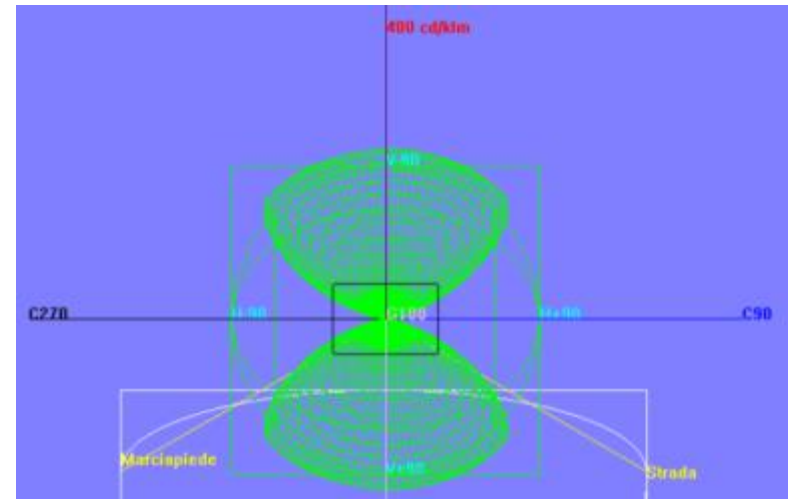


- 25 LED "Royal blue" type
- Mixing chamber, with 98% coefficient of reflection
- Glass with phosphor
- Integrated diffusor
- NTC Temperature sensor

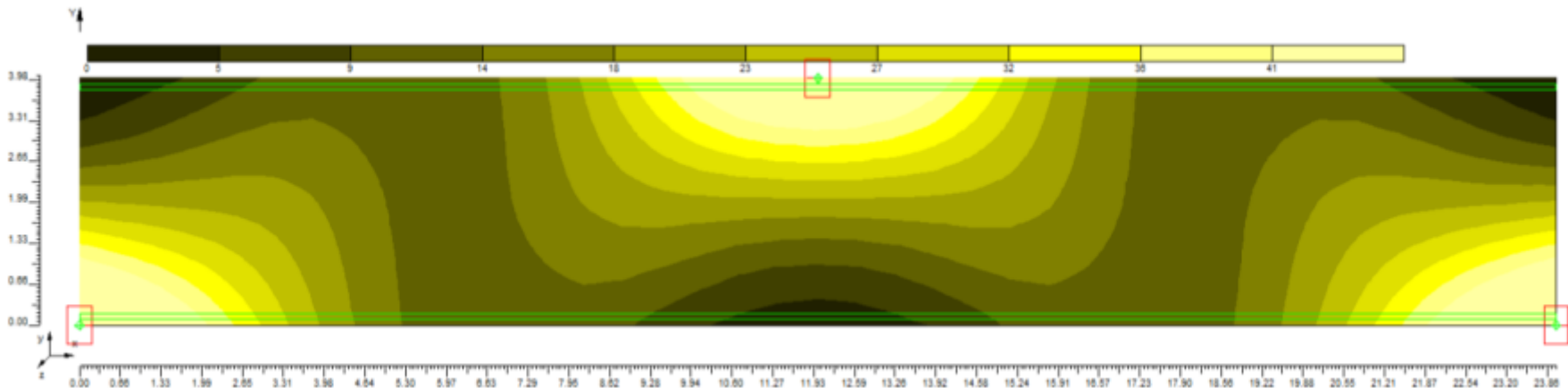


# HYDRA: lighting data

Flow	Power 2013
3000 lm	38 W
4000 lm	53 W



Type of installation: Height 4 m  
 Quincuncial disposition with 24 m distancing



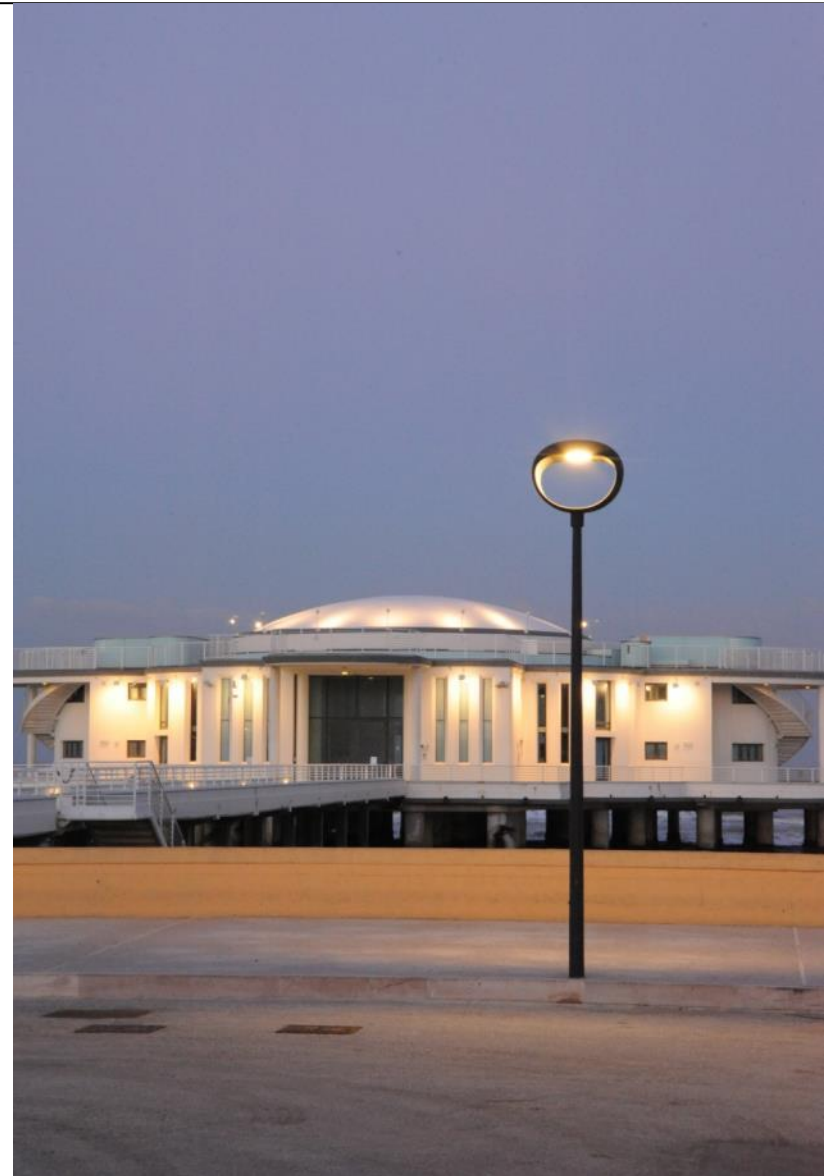
## HYDRA AT THE ADI

Hydra has been chosen for the ADI 2013 prize among the products that will compete in the next *Compasso d'oro*, the most prestigious design prize of Italy. It was thus exhibited at the Triennale of Milan, and it will then become part of the permanent exposition of Italian design



## HYDRA IN SENIGALLIA

Senigallia has chosen Hydra to replace 230 spheres that illuminated the promenade, renovating the roads that start from the famous Rotunda on the sea. Hydra represents the completion of a renovation that has placed Senigallia at the summit of the Adriatic coast





NERI



NERI





NERI





NERI



NERI



NERI



NERI



NERI



NERI





NERI



NERI



NERI



NERI



NERI



NERI



NERI



NERI





NERI



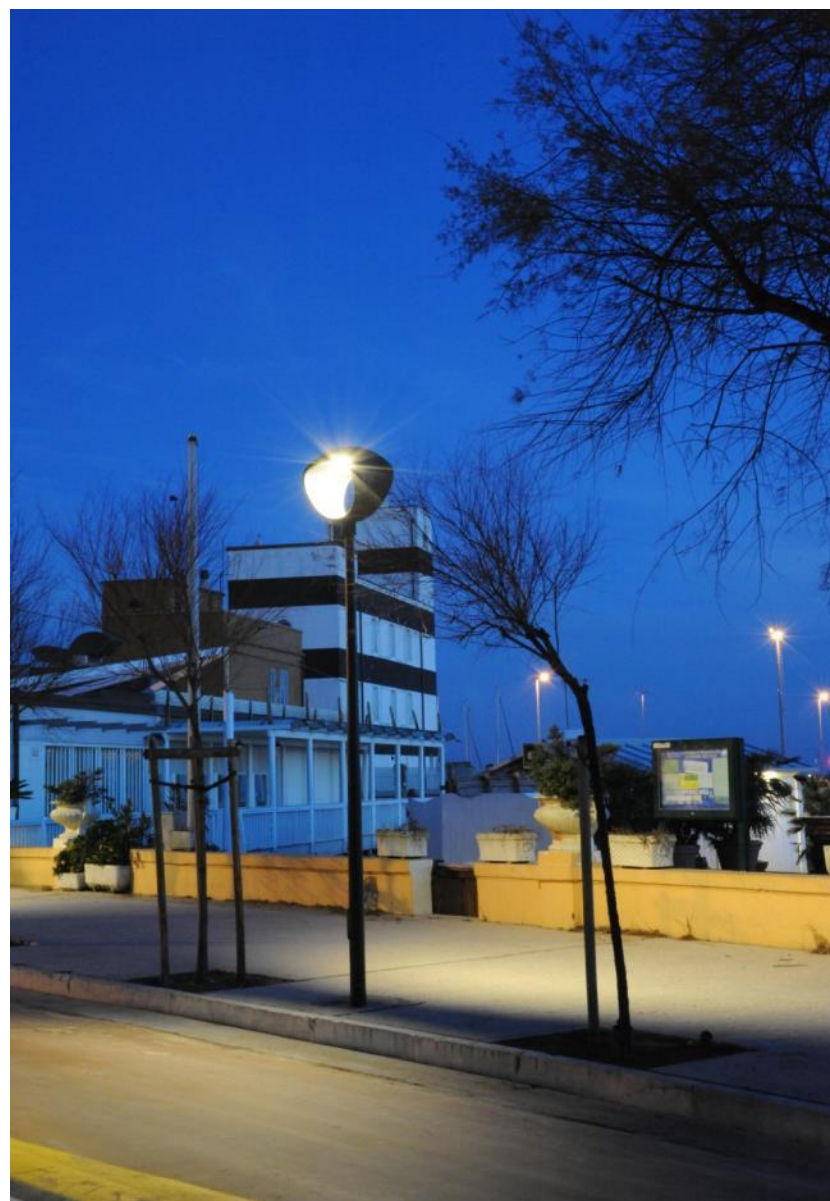
NERI



NERI



NERI



NERI



NERI





NERI





NERI



NERI



NERI

# HYDRA

---

To conclude this array, it might be helpful to see how the lighting was done in the coast of Senigallia before and what changes have been made.

We present below the promenade that has not yet had the substitution of the spheres with Hydra, which represents the previous condition quite well, with glaring, powerful and dispersive lights that had much alteration of natural colours; certainly also with heavy light pollution



NERI

This instead is the clear demonstration of the orientation of the light of Hydra towards the road without upward dispersal



**Thank you**