

# NERI



The series features a conical shape with an angled end element. This aesthetic characteristic defines many of its products, that are a bollard, an ashtray, a litter bin, a clock, signage and a bus shelter. Carya products have been designed to match Chara lighting system.

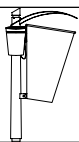
**La serie è caratterizzata da un tubo conico con terminale inclinato. Questa caratteristica estetica definisce molti dei suoi prodotti: dissuasore, posacenere, cestino, orologio, stendardo e pensilina. La forma dei prodotti Carya si coordina con il sistema di illuminazione Chara.**



Bollard  
**Dissuasore**



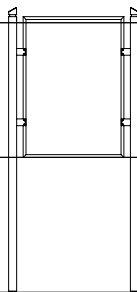
Ashtray  
**Posacenere**



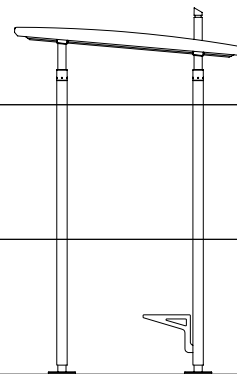
Litter bin  
**Cestino**



Clock  
**Orologio**



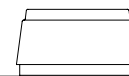
Notice board  
**Stendardo**



Bus shelter  
**Pensilina**



Bench  
**Panchina**



Planter  
**Fioriera**



Bench  
**Panchina**



Bollard  
**Dissuasore**



Ashtray  
**Posacenere**



Litter bin  
**Cestino**



Planter  
**Fioriera**



Notice board  
**Stendardo**



Clock  
**Orologio**



Bus shelter  
**Pensilina**

# Bench

## Panchina

The Carya collection's bench was conceived by designer Iosa Ghini with curved airy lines.

**La panchina della serie Carya è stata disegnata dal designer Iosa Ghini, con una linea morbida ed aerea.**





















# Bollard

## Dissuasore

The bollards recall the design of the Chara lighting system, using materials such as cone-shaped steel, a universal shape that perfectly merges with any architectural setting, either classical and modern.

**I dissuasori riprendono la linea del sistema di illuminazione Chara con impiego di materiali quali l'acciaio a forma conica, una forma universale che ben si integra in qualsiasi contesto architettonico, sia classico che moderno.**





























**NERI**



**Carya series** | Street furniture



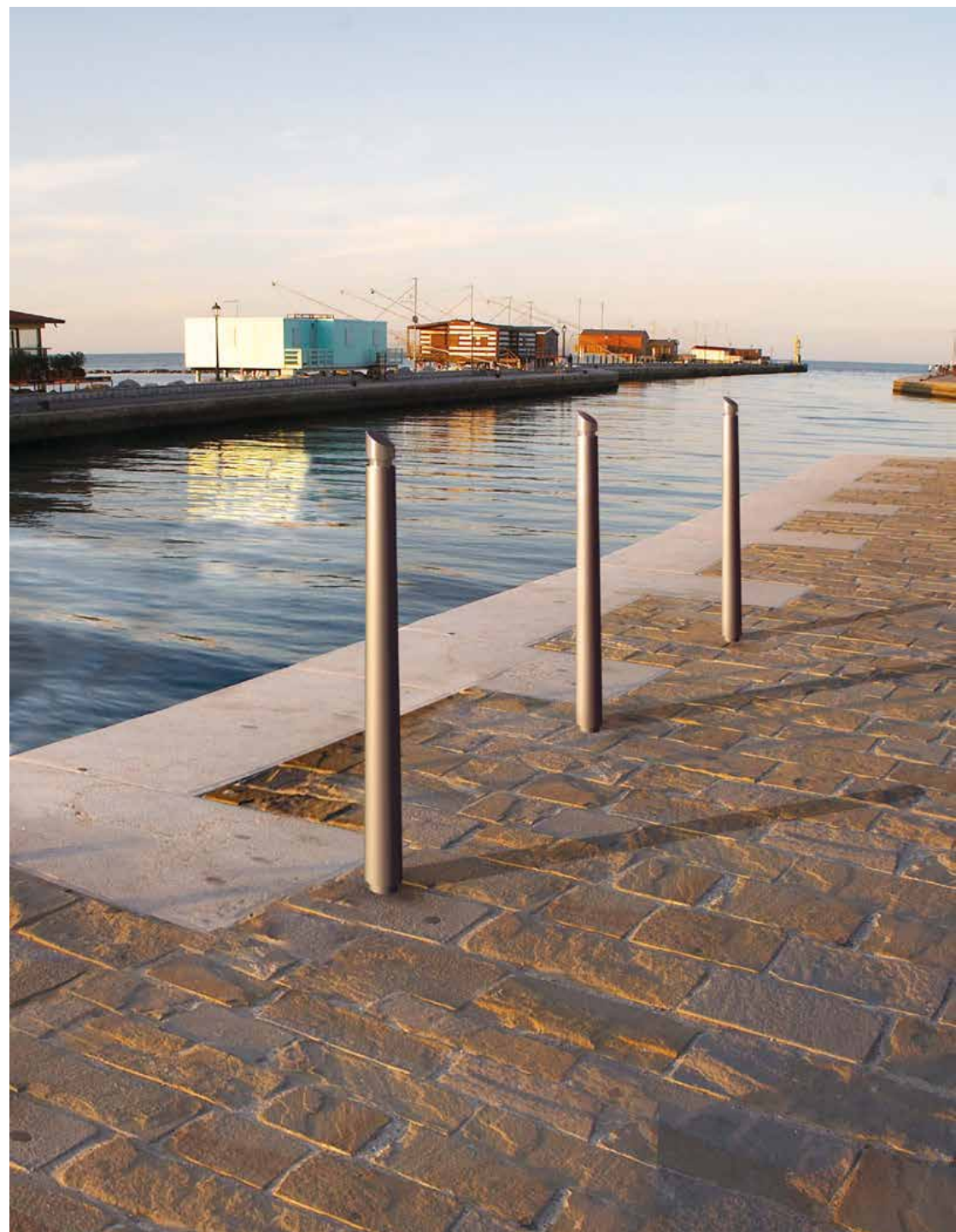
**NERI**



**Carya series** | Street furniture



**NERI**



**Carya series** | Street furniture

# Ashtray

## Posacenere

The ashtray is the evolution of the bollard, completed with the container that is also cone-shaped. The name of the municipality, hotel or restaurant where the item is installed can be written by perforation on the lid.

**Il posacenere rappresenta l'evoluzione del dissuasore, integrato dal contenitore anch'esso di forma conica. Sul coperchio del posacenere può essere traforato il nome del municipio, dell'hotel o del ristorante in cui è montato il manufatto.**





**NERI**



**Carya series** | Street furniture

# Litter bin

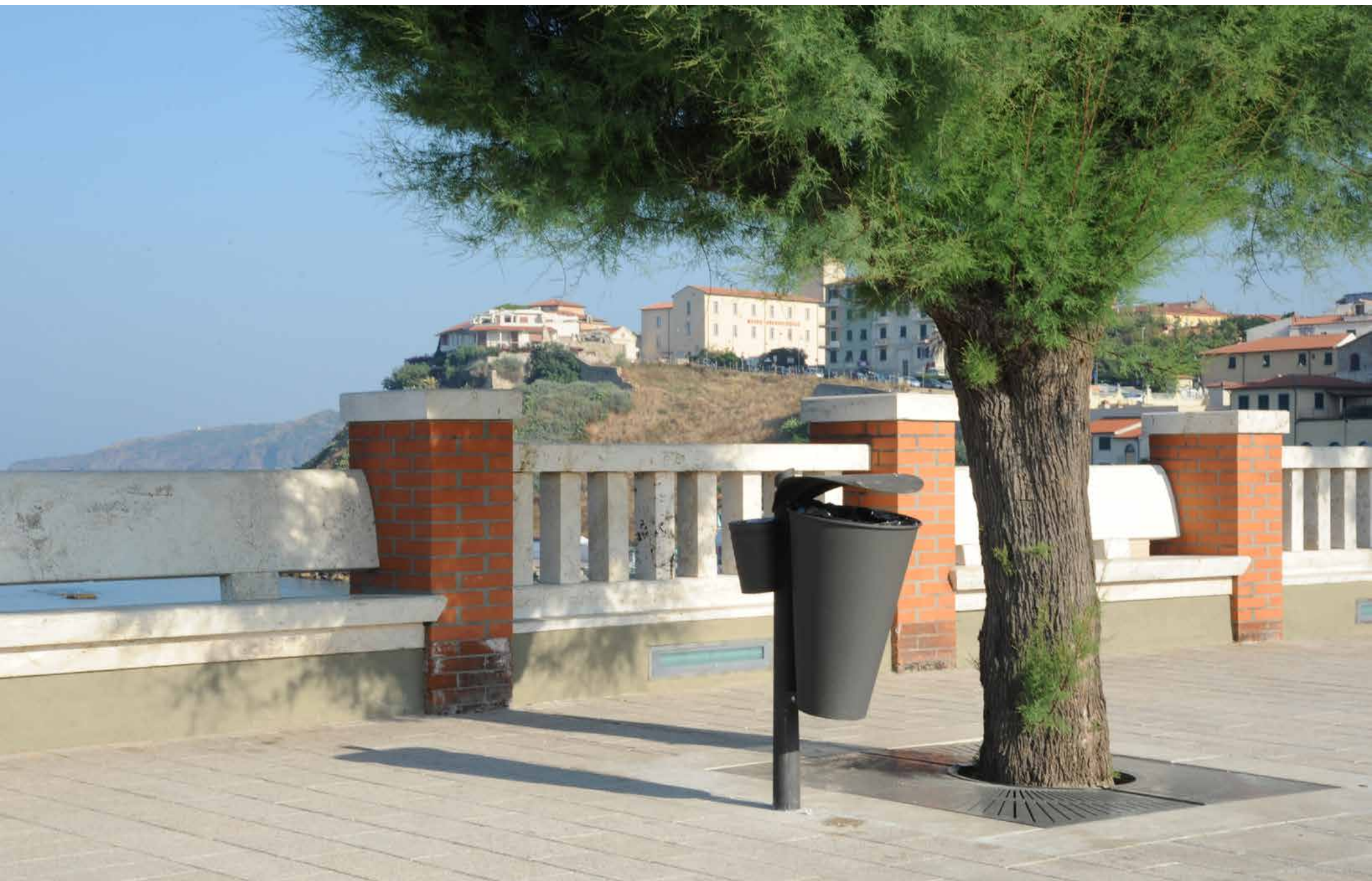
## Cestino

The conical shape also enhances the elegant and harmonious litter bin.

**La forma conica domina anche nel caso del cestino portarifiuti, elegante ed armonioso.**

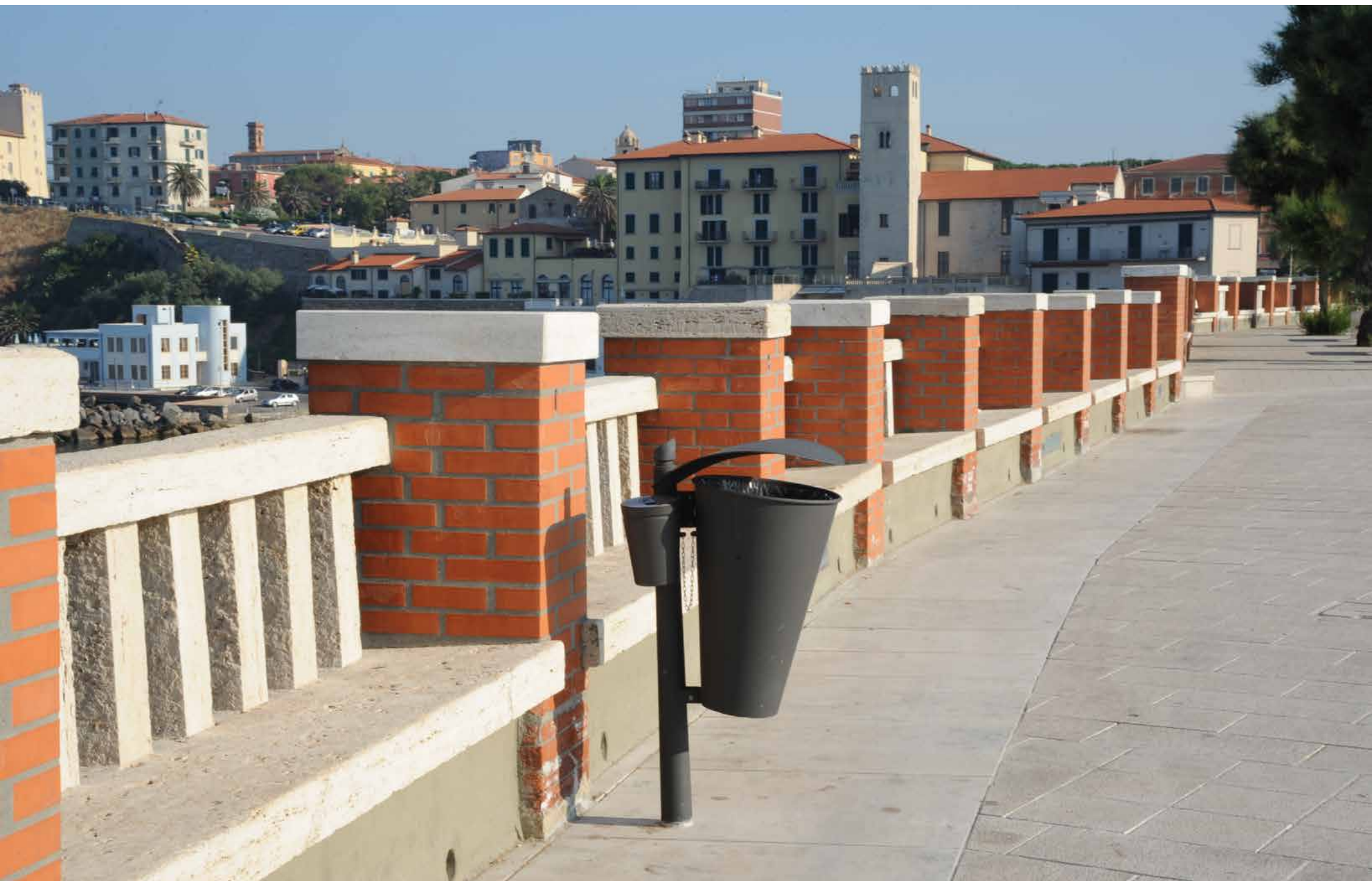




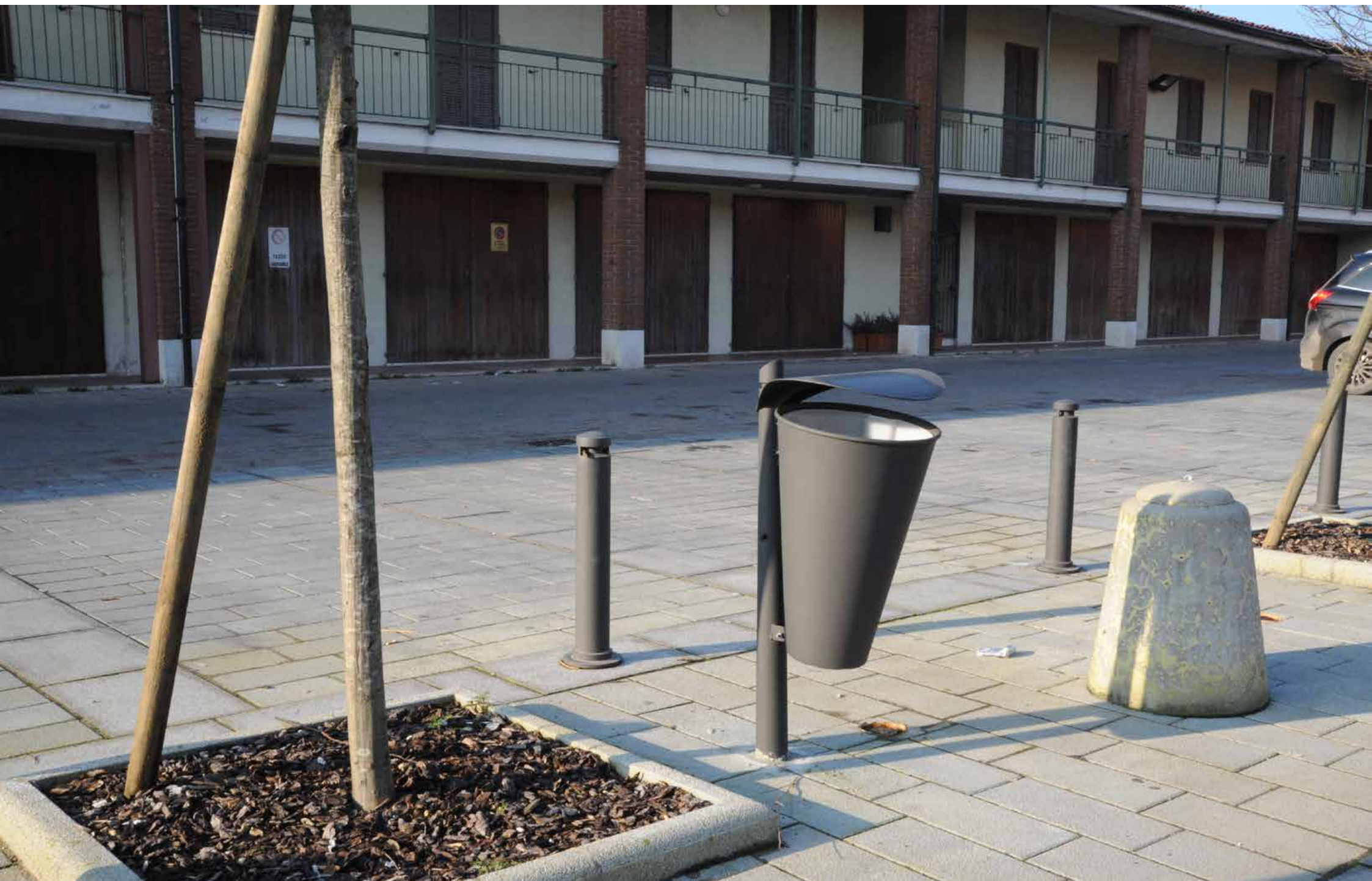
















**NERI**



**Carya series** | Street furniture



NERI



Carya series | Street furniture

# Planter

## Fioriera

Steel and conical shapes are also the choice for the flower stand.

**Acciaio e conicità ritornano anche per la fioriera.**







# Notice board

## Stendardo

The notice board presents the crucial feature of being both simple and universal.

**Lo stendardo ha il grande pregio di essere semplice ed universale.**





## Sansepolcro and Santarcangelo di Romagna – Italy



NERI



Carya series | Street furniture

# Clock

# Orologio

The clock that is not installed right at the centre and the conical pole make the item innovative and modern.

**L'orologio non perfettamente centrale, abbinato alla conicità del palo, rende l'oggetto innovativo e contemporaneo.**





NERI



Carya series | Street furniture

# Bus shelter

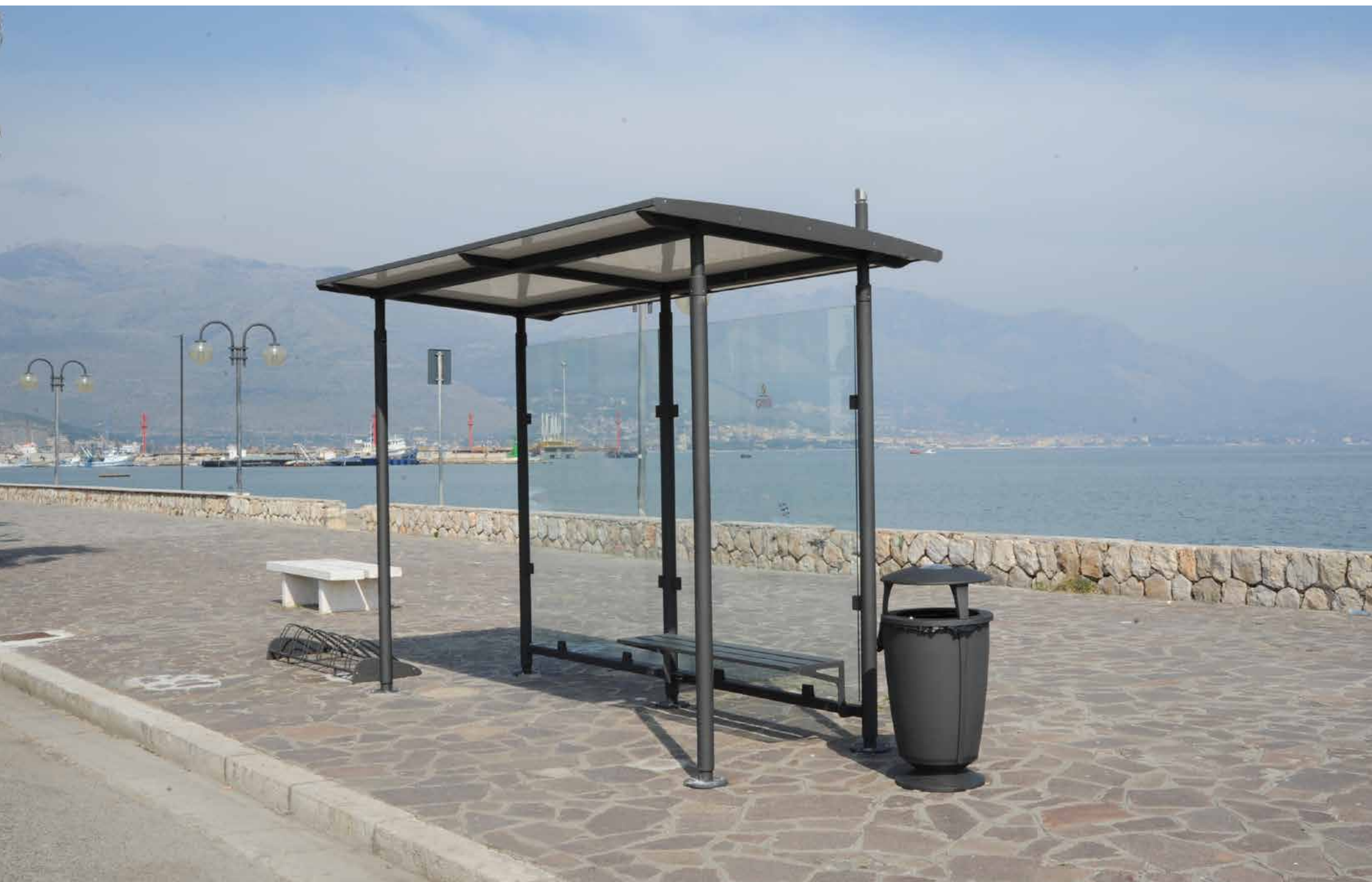
## Pensilina

The bus shelter presents the key features of the above items in the collection; hence, it is simple, basic and harmonious.

**La pensilina riassume i pregi elencati per gli articoli precedenti della serie: semplice, essenziale ma armoniosa.**



















Thank you  
**Grazie**